

Healthcare Coalition Development and Pandemic Influenza Planning, Seattle & King County, WA

Cynthia Dold, MPP, MPH, Public Health – Seattle and King County

Allison Schletzbaum, MSOD, Harborview Medical Center



© Tim Kouril

Local Assessment

- Over 1.7 million in population
- 13th most populous county in the nation
- 3 Emergency Management Zones
- 39 Cities, 130+ Special Purpose Districts
- 2 Tribal Nations
- 18 Hospitals w/ ER's, 5 Specialty Hospitals
- 37 Safety Net Clinics
- 1100 Residential Long Term Care Facilities

Summary

The Healthcare Coalition is a network of healthcare organizations and providers committed to coordinating their emergency preparedness and response efforts.

The Purpose of the Coalition is to:

Manage the health system's response (ESF-8) under unified command and integrate into the larger regional emergency response.

Expand the health system's emergency response capacity and capability through information and resource sharing.

Coordinate the health system's emergency response through effective communications.

Advise public officials on health policy matters in planning for and responding to emergencies.

Coalition Members

Members are healthcare organizations that provide direct care services to the public.

- Hospitals
- Medical Groups
- Safety Net Providers
- Mental Health
- Home Health
- Long Term Care
- Specialty Providers
- Tribes

Coalition Partners

Partners are associations, organizations and public agencies who coordinate with the Coalition to achieve mutual preparedness and response goals.

- EMS
- Blood Centers
- Associations
- Poison Center
- Fire Departments
- Police Departments
- American Red Cross
- Public Agencies

Role for Public Health

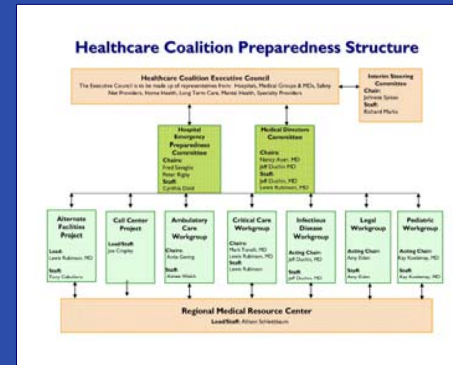
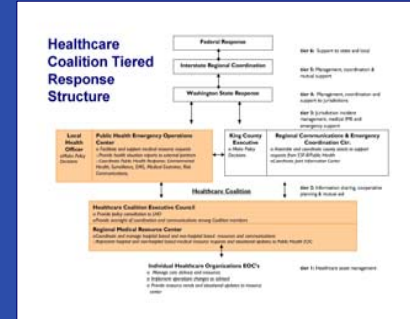
- Convener and facilitator of healthcare system planning.
- A neutral party in a competitive healthcare market.
- May have jurisdictional authority during a health emergency.

Planning Priorities

- Pandemic Flu Planning and Response Protocols
- Communication and Coordination Protocols, including influenza surveillance
- Regional Medical Resource Center Development
- Regional Medical Surge Capacity and Capability Planning, including Alternate Care Facility Planning
- Regional Call Center Coordination
- Legal and Insurance Coordination and Planning
- Cross County Coordination and Planning

Response Structure

The King County Healthcare Coalition Tiered Response Model is based on the HHS Medical Surge Capacity and Capability Management System. The chart to the right highlights a Healthcare Coalition tier that coordinates information and assets for the healthcare system. It also depicts how the healthcare coalition integrates into the all-hazards response structure for emergencies in King County.



Planning Structure

The chart to the left outlines the planning structure of the Healthcare Coalition. In order to address the Coalition planning priorities, it requires oversight from a governing body and coordination among a number of committees and workgroups that include coalition members, partners, and experts from the community, as well as staff support. Planning is for all-hazards, but with an emphasis on pandemic flu planning currently.

Challenges

- Insufficient funding for healthcare system planning
- Inadequate staffing to support partnership management and planning
- Engaging and sustaining executive level participation
- Organizational management of multiple planning priorities
- Communication, communication, communication

Further Information

Cynthia Dold
Public Health - Seattle and King County
206.205.0456
Cynthia.dold@metrokc.gov
<http://www.metrokc.gov/health/hccoalition>

Acknowledgements

Johnese Spisso, Harborview Medical Center (Chair) | Aimee Welch, Ambulatory Care | Allison Schletzbaum, Regional Medical Resource Center | Amy Eiden, Legal | Cynthia Dold, Hospitals & Healthcare Coalition Development | Danica Mann, Hospitals – Training, Exercises and Planning | Jeff Duchin, MD, Infectious Disease, Medical Directors | Joe Cropley, Call Center Project | Kay Koelmay, MD, Pediatrics, Staff Training | Lewis Rubinson, MD, Disaster Medical Director, Critical Care | Lydia Ortega, Program Assistant | Richard Marks, (consultant) |